

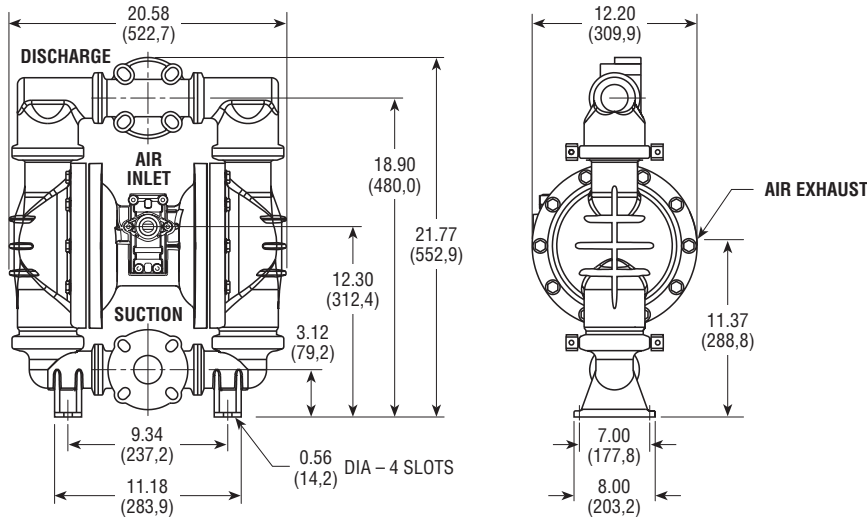
# PERFORMANCE PLUS

# 1 1/2"

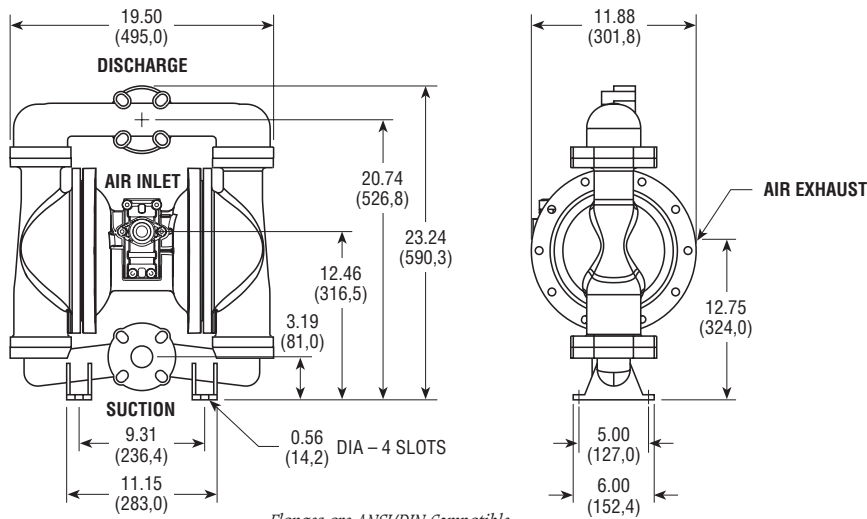
**NEW**



## PLASTIC *Dimensions in inches and (mm).*



## METALLIC



### PLASTIC MODELS:

<b>PB-15</b> (Polypropylene/Geolast®)	46 lbs. (20,8 kg.)
<b>PT-15</b> (Polypropylene/PTFE)	46 lbs. (20,8 kg.)
<b>PE-15</b> (Polypropylene/Santoprene®)	46 lbs. (20,8 kg.)
<b>KT-15</b> (PVDF/PTFE)	65 lbs. (29,4 kg.)
<b>KE-15</b> (PVDF/Santoprene®)	65 lbs. (29,4 kg.)

### METALLIC MODELS:

<b>AB-15</b> (Aluminum/Geolast®)	60 lbs. (27,2 kg.)
<b>AE-15</b> (Aluminum/Santoprene®)	60 lbs. (27,2 kg.)
<b>AT-15</b> (Aluminum/PTFE)	60 lbs. (27,2 kg.)
<b>SP-15</b> (316 Stainless Steel/PTFE)	133 lbs. (60 kg.)
<b>SE-15</b> (316 Stainless/Santoprene®)	133 lbs. (60 kg.)
<b>SB-15</b> (316 Stainless/Geolast®)	133 lbs. (60 kg.)

*See page 4 for fastener and valve seat material.*

### SPECIFICATIONS:

- Capacity:** Adjustable . . . . . 0 to 130 GPM (492 liters/min.)
- Maximum Temperature:**
  - KT-15 Model . . . . . 200°F (93°C)
  - Other Plastic Models . . . . . 150°F (66°C)
  - Metallic Models . . . . . 200°F (93°C)

**Maximum Air Pressure:** All Models . . . . . 120 PSI (8,2 bar)

**Minimum Air Pressure:** All Models . . . . . 20 PSI (1,3 bar)

**Dry Lift:** Models w/PTFE balls . . . . . 10 ft. (3 meters)  
Other Models . . . . . 15 ft. (4,5 meters)

**Maximum Solids:** . . . . . 1/4" (6,4 mm)

**Air Supply:**  
Inlet . . . . . 3/4" NPT/BSP Female  
Outlet . . . . . 3/4" NPT/BSP Female  
• *Muffer supplied*

**Fluid Inlet/Discharge:** . . 1-1/2" Flange (38,1 mm)  
• *Flanges are ANSI and DIN compatible*  
• *Threaded companion flanges available*

## PERFORMANCE CURVE

